



Pennies for Quarters

Tiny House Development | Building Materials and Support Opportunities

Prepared by: M. O'Brien - 05/07/21



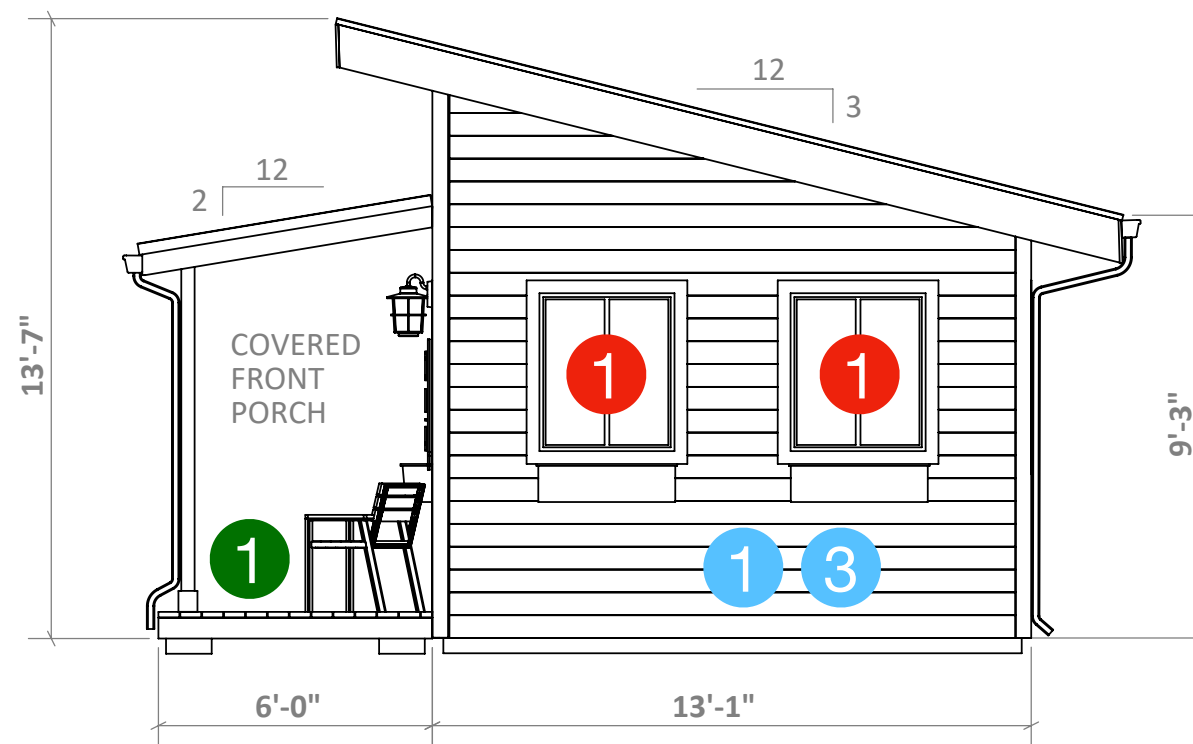
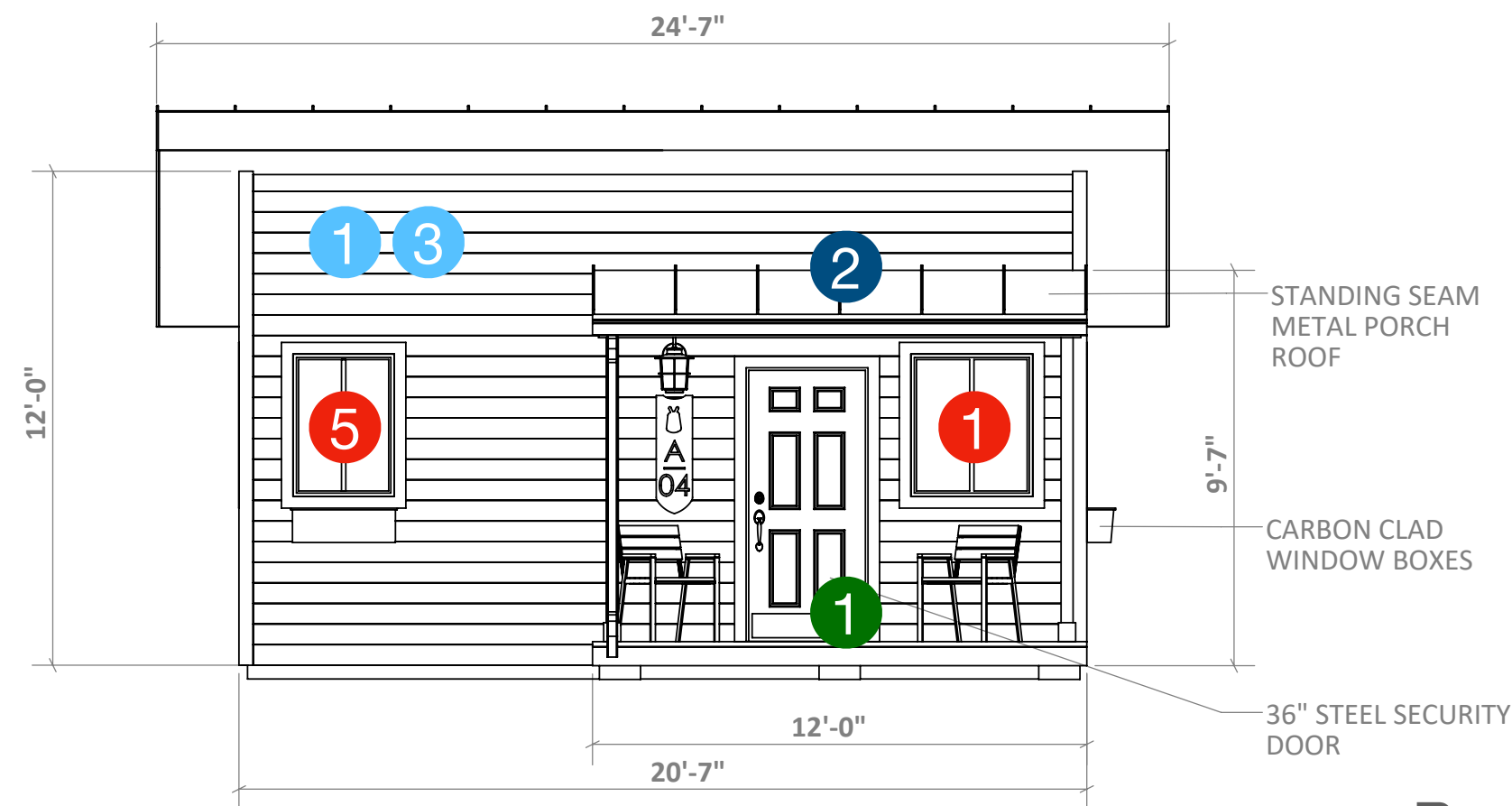
PFQ TINY HOUSE | ELEVATIONS

Siding and Insulation

- 1 Wall Insulation - 2 layers of 1" Kingspan K12 Poly-Iso Rigid Foam (1500sf)
- 2 Roof Insulation - 2 layers of 2" Kingspan K12 Poly-Iso Rigid Foam (920sf)
- 3 Hardi-Plank Concrete Siding (750sf)

Windows

- 1 36x42 Slider (3x)
- 2 48x48 Slider
- 3 24x30 Slider - privacy
- 4 30x30 SH - privacy
- 5 30x42 Slider (2x)

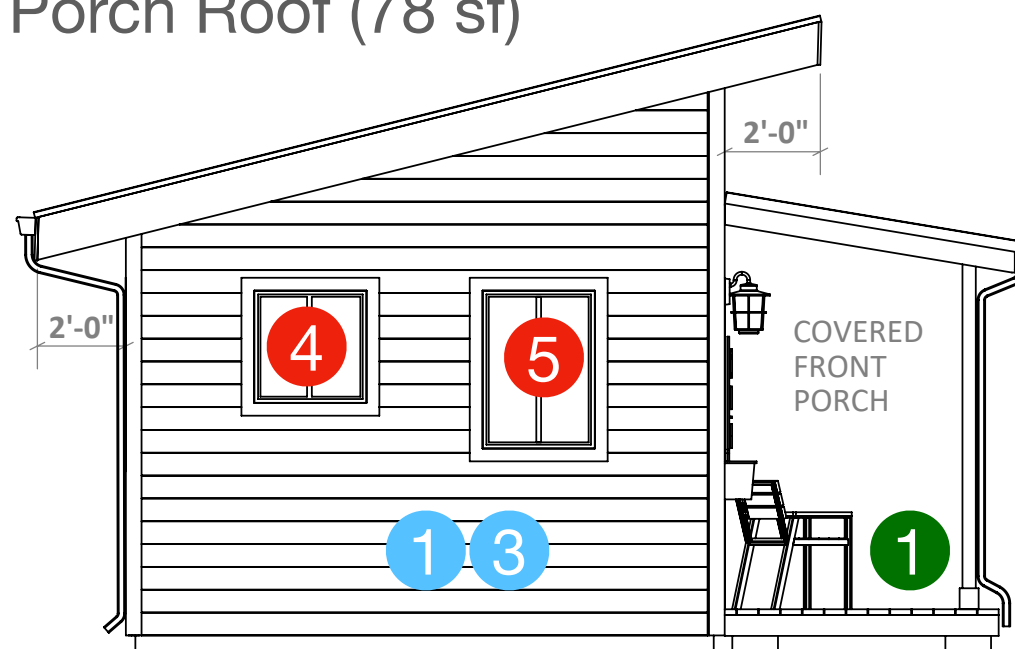
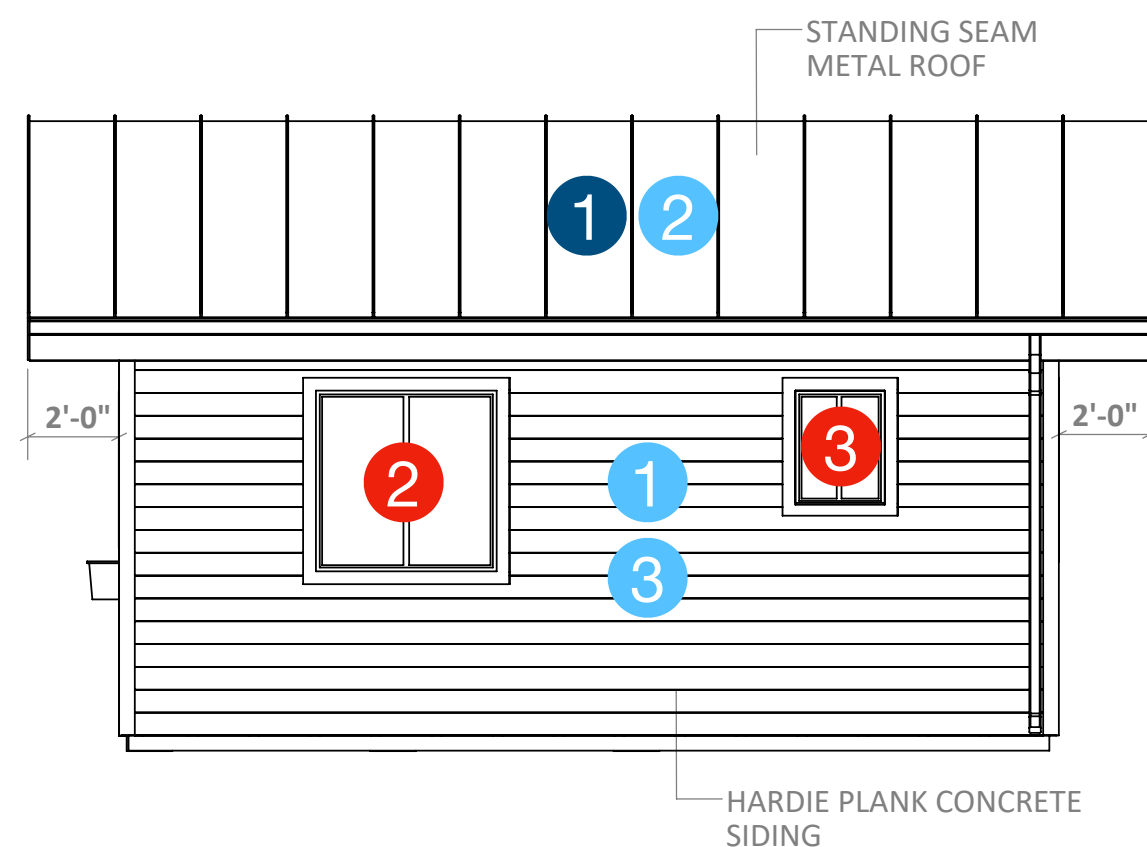


Roofing

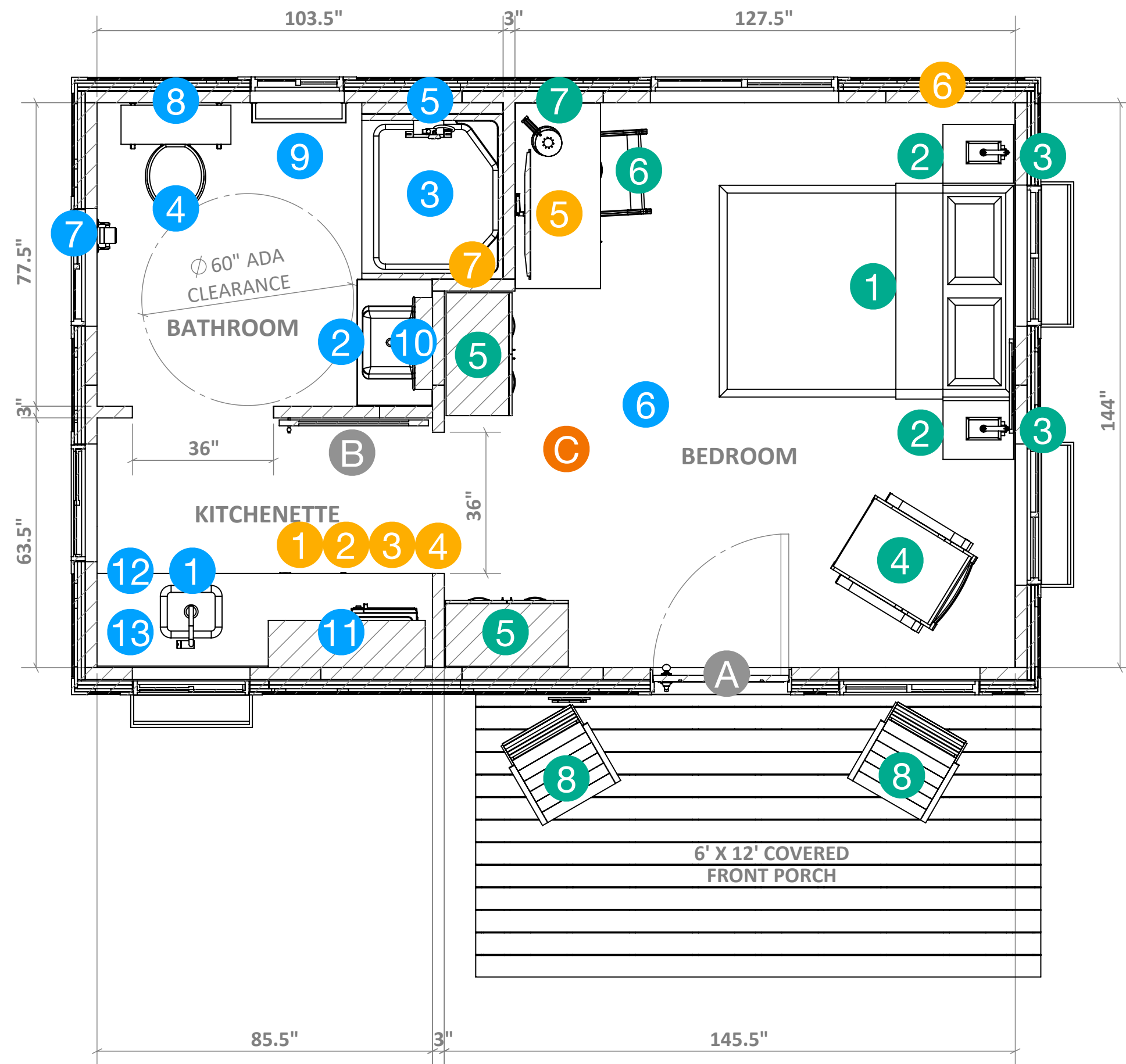
- 1 SS Metal Roof (460 sf)
- 2 SS Metal Porch Roof (78 sf)

Porch

- 1 Deck, Support Posts and Roof Structure (6'x12' - 72sf)



PFQ TINY HOUSE | FLOOR PLAN



Fixtures and Casework

- 1 Single Bowl SS Sink (22x25)
- 2 ADA Bathroom Sink (wall mount)
- 3 ADA Shower (42x36)
- 4 ADA Commode
- 5 Exhaust Fan (Wall Mount -180 CFM)
- 6 44" Ceiling Fan (overhead)
- 7 TP Dispenser (wall mount)
- 8 Towel Shelf (wall mount)
- 9 Towel Rack (wall mount)
- 10 Medicine Cabinet & Mirror
- 11 Kitchen Shelves (open - 40" 2x)
- 12 Base Cabinets (85.5")
- 13 Countertop & Backsplash (85.5")

Appliances

- 1 UC Refrigerator (24")
- 2 Microwave
- 3 Keurig Coffee Maker
- 4 Toaster
- 5 38" LED Television
- 6 Mini Split HVAC
- 7 Tankless Water Heater

Furniture

- 1 Full Size Bed
- 2 Night Stand (2x)
- 3 Night Stand Lamps (2x)
- 4 Lounge Chair
- 5 Ward Robe (2x)
- 6 Desk and Chair
- 7 Desk Lamp
- 8 Porch Chairs

Doors

- A 36" Exterior Steel Door
- B Sliding Trolley Door (42x84)

Floor Covering

- C LV Plank (240sf)



PFQ TINY HOUSE | INTERIOR RENDERINGS



View of bedroom from doorway



View from bedroom towards kitchenette



Kitchenette



ADA accessible bathroom



ADA bathroom sink and shower