



Pennies for Quarters

Tiny House Development | Building Materials and Support Opportunities

Prepared by: M. O'Brien - 05/07/21



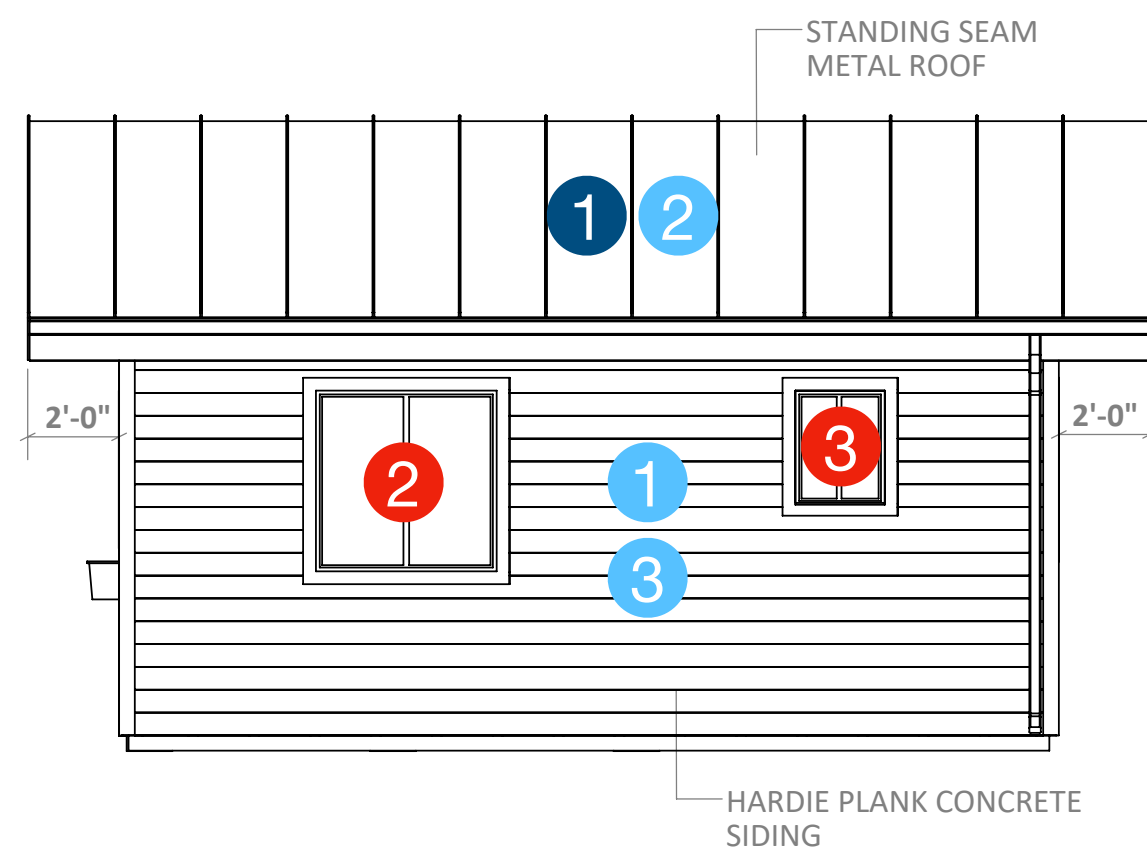
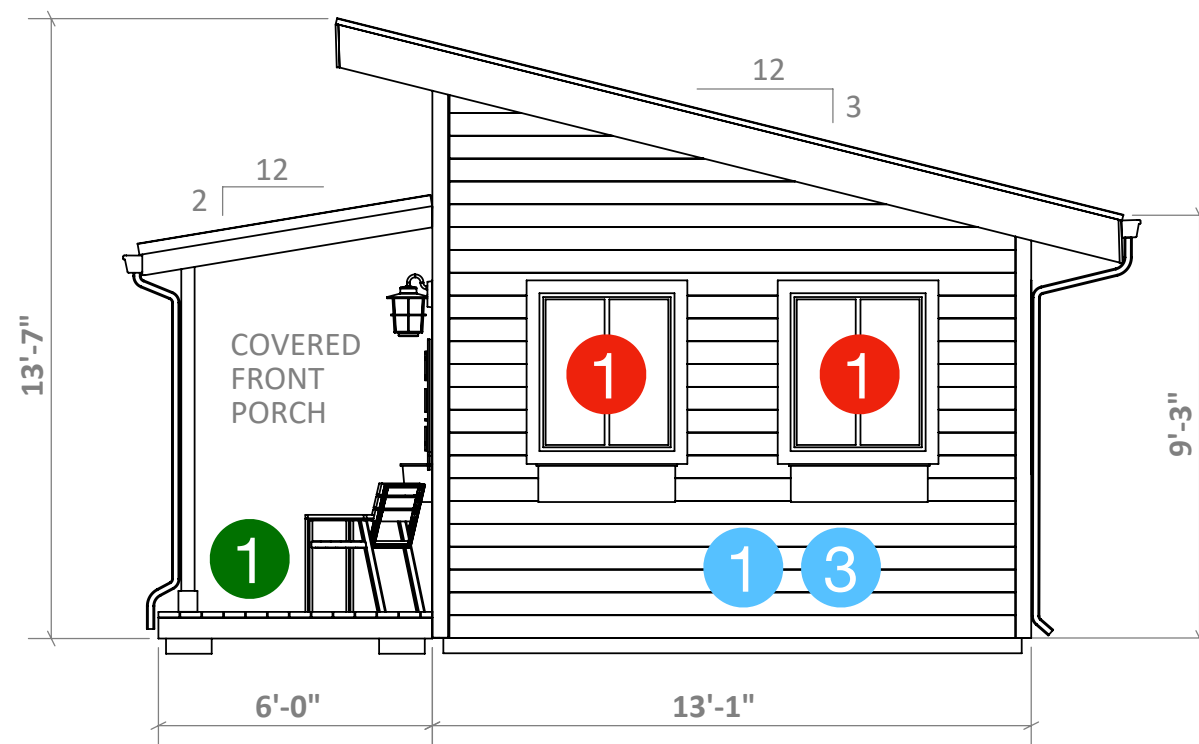
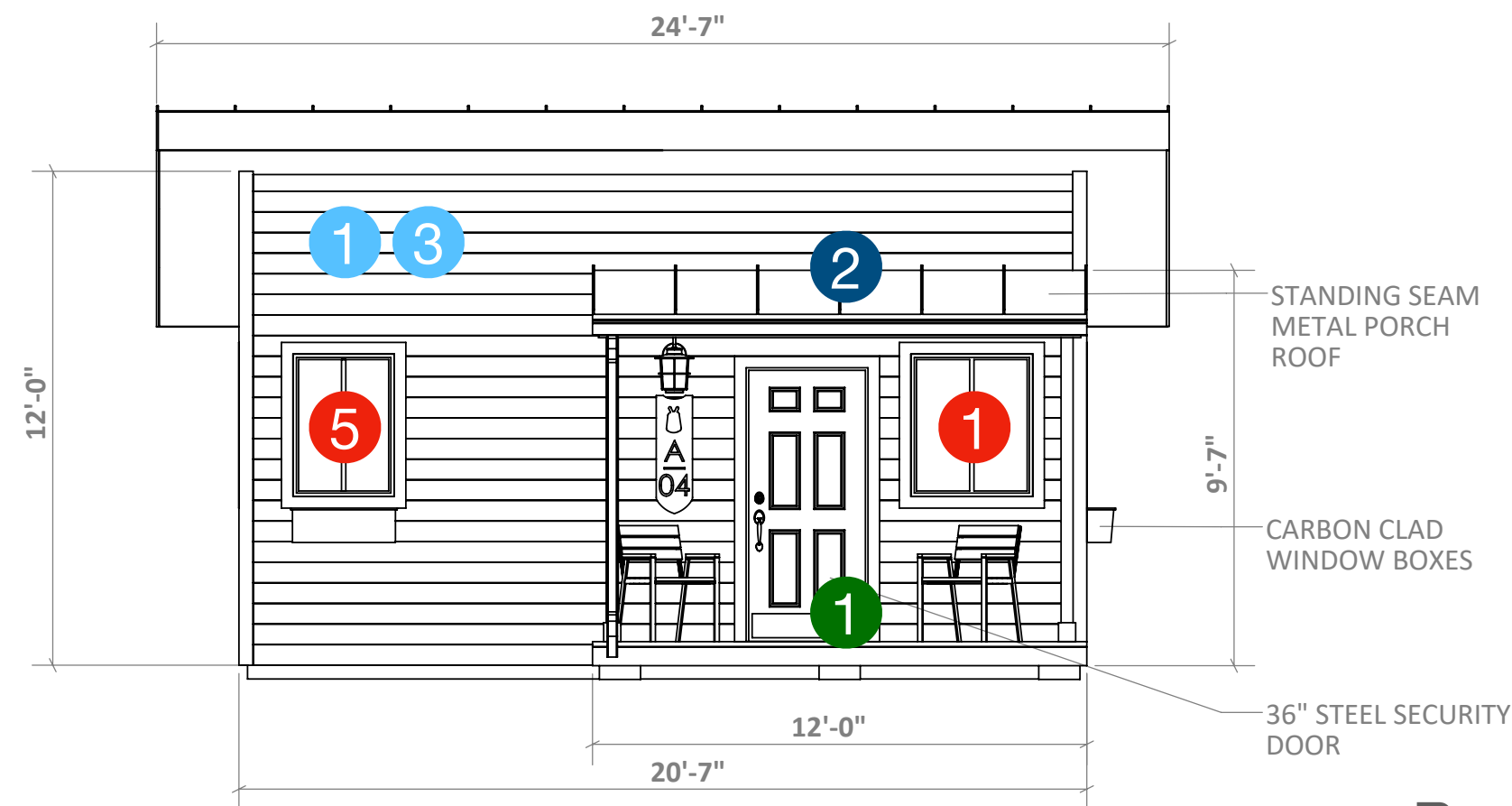
PFQ TINY HOUSE | ELEVATIONS

Siding and Insulation

- 1 Wall Insulation - 2 layers of 1" Kingspan K12 Poly-Iso Rigid Foam (1500sf)
- 2 Roof Insulation - 2 layers of 2" Kingspan K12 Poly-Iso Rigid Foam (920sf)
- 3 Hardi-Plank Concrete Siding (750sf)

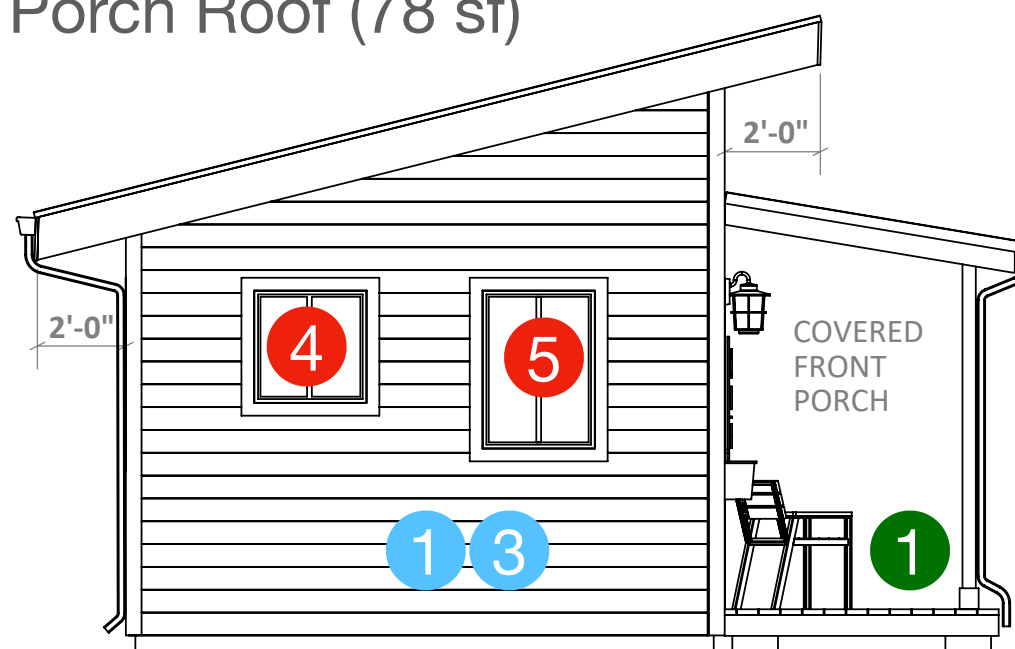
Windows

- 1 36x42 Slider (3x)
- 2 48x48 Slider
- 3 24x30 Slider - privacy
- 4 30x30 SH - privacy
- 5 30x42 Slider (2x)



Roofing

- 1 SS Metal Roof (460 sf)
- 2 SS Metal Porch Roof (78 sf)



Porch

- 1 Deck, Support Posts and Roof Structure (6'x12' - 72sf)

